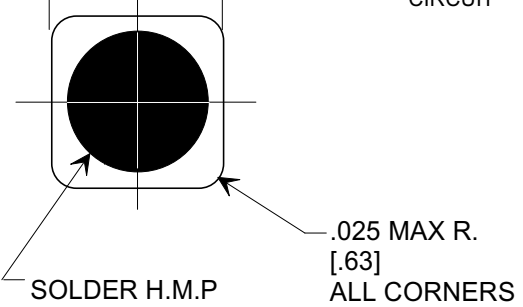
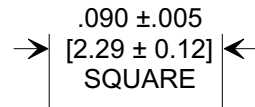
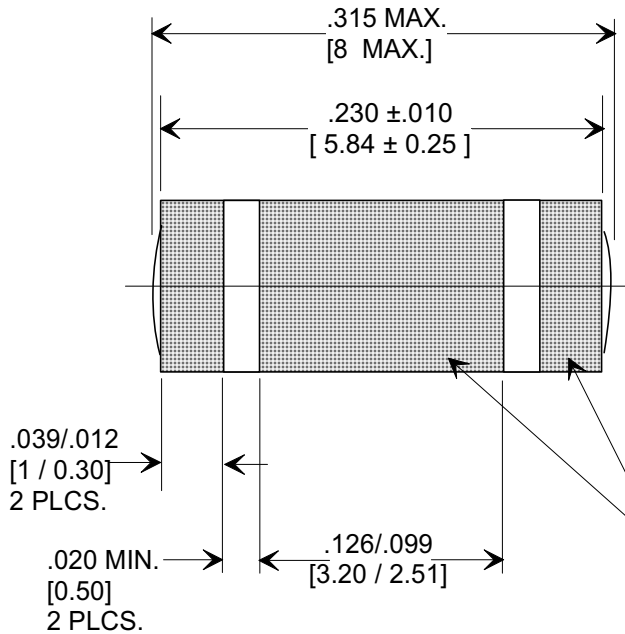
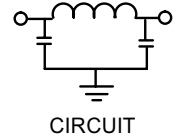
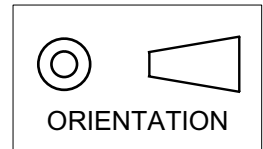


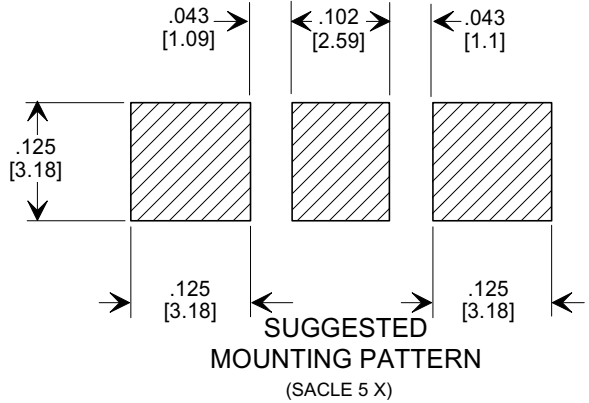
MARKETING SALES DRAWING

DIMENSIONS IN INCHES - DO NOT SCALE THIS DRAWING  
 DIMENSIONS IN METRIC [ ]

Electrical Testing  
 per Tusonix standard  
 test plans and Mil-Std-202  
 Test Methods.



ELECTRODE TERMINATION



1. INDUCTANCE TO BE 0.1 μH MINIMUM.
2. PACKAGE: BULK OR BLISTER TAPE TO IEC-286-3 TYPE II AND EIA-481-A.

059	100 pF	-20% / +80%	100	300VDC	10A	SOLDER	--	3	16
058	1000 pF	GMV	100	300VDC	10A	SOLDER	7	40	65
056	5000 pF	-20% / +80%	100 @ +85°C	300VDC	10A	SOLDER	15	55	70
053	2000 pF	GMV	100	300VDC	10A	SOLDER	10	45	70
009	470 pF	+80% / -20%	100	300 VDC	10 A	SOLDER	1	16	40
008	4000 pF	+80% / -20%	100@+85°C	300 VDC	10 A	SOLDER	13	52	70
006	100 pF	+80% / -20%	100	300 VDC	10 A	SOLDER	----	3	16
005	1000 pF	GMV	100	300 VDC	10 A	SOLDER	7	40	65
003	2000 pF	GMV	100	300 VDC	10 A	SOLDER	10	45	70
ITEM	CAP.	TOLERANCE	WVDC +125°C	TEST VOLTAGE	I <sub>DC</sub>	ELECTRODE TERMINATION	TYPICAL NO LOAD INSERTION LOSS dB AT 25°C PER MIL-STD-220		
							10 MHZ	100 MHZ	1 GHZ

X-2015 Rev-0

REVISION RECORD	Original Release	0
	DELETED ITEMS 000, 001, 002 & 007. S.M. 01-16-97	8
	970109-3	8
	DIM. .085 ±.005 WAS .083 ±.004. S.M. 07-1598	9
	19980715-8-03	9
	ITEM 009 & ORIENTATION SYMBOL ADDED L.E. 06-18-01	10
20010618-5-01	10	
DIM .090 WAS .085. REVISED MOUNTING PAT. ADDED ITEMS FROM 4700-050. S.M. 09-19-01	11	
20010918-3-01	11	

--TOLERANCES-- Unless Otherwise Specified		Title <b>SURFACE MOUNT SQUARE STYLE PI FILTER</b>	
DECIMAL ± .005 [0.12]		Drawn FG 9-9-94	
ANGLES ±		Scale 10 X	
		Approved NV 9-9-94	
		<b>A</b> <b>4700-STYLE</b>	